



CHATTERTON | REES



16 Sydney Mews

, London, SW3 6HL

£2,350,000



3



2



2



C



# 16 Sydney Mews



## Description

Arranged across the first and second floors with 1,531sq ft of internal space, this beautifully presented maisonette offers well-balanced and thoughtfully designed accommodation. The property comprises three generous double bedrooms in addition to a separate study and enjoys attractive southerly views towards St Luke's Church and down Sydney Street.

The first floor is bright and welcoming, featuring wooden flooring throughout and a superb full-width reception and dining room extending to approximately 26 feet. This impressive space benefits from triple south-facing windows, flooding the room with natural light, and provides access to a contemporary fitted kitchen positioned to the rear. A well-appointed study completes this level.

The second floor accommodates three double bedrooms and two bathrooms, all finished to an exceptionally high standard with tasteful décor throughout.

Sydney Mews is discreetly positioned just off Fulham Road in the heart of Chelsea. The location is exceptionally convenient for South Kensington Underground Station and offers easy access to the renowned shops, restaurants and amenities of both Chelsea and South Kensington.

- 3 Bedrooms
- Large Lateral Living Space
- South Facing
- 2 Bathrooms
- Newly Refurbished
- Prime Chelsea Location







# Floor Plan

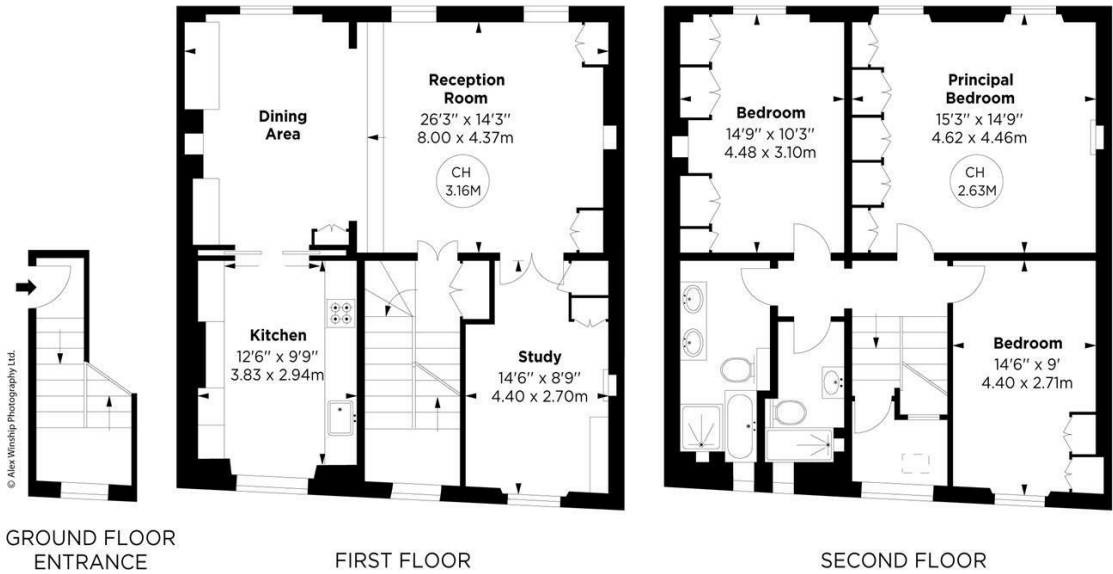
## Sydney Mews, SW3

APPROX. GROSS INTERNAL AREA \*  
1531 Sq Ft - 142.24 Sq M

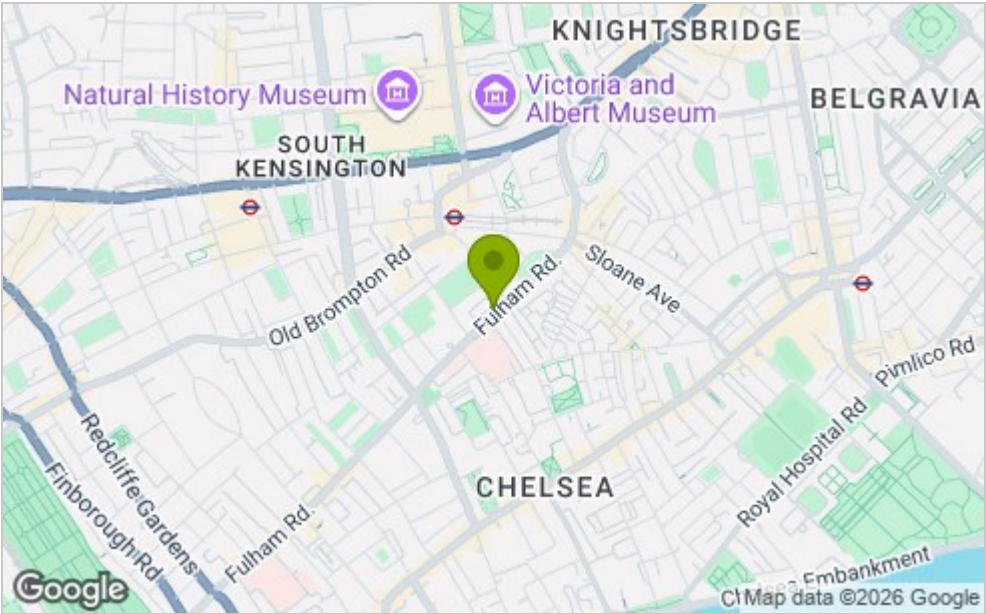


This floorplan is for GUIDANCE ONLY and NOT FOR VALUATION purposes.

Key :  
CH - Ceiling Height



# Area Map



# Viewing

Please contact our Chatterton Rees Office on 020 3780 0580 if you wish to arrange a viewing appointment for this property or require further information.

These particulars, whilst believed to be accurate are set out as a general outline only for guidance and do not constitute any part of an offer or contract. Intending purchasers should not rely on them as statements of representation of fact, but must satisfy themselves by inspection or otherwise as to their accuracy. No person in this firm's employment has the authority to make or give any representation or warranty in respect of the property.

# Energy Efficiency Graph

